

Plans are not to scale. For indicative purposes only.

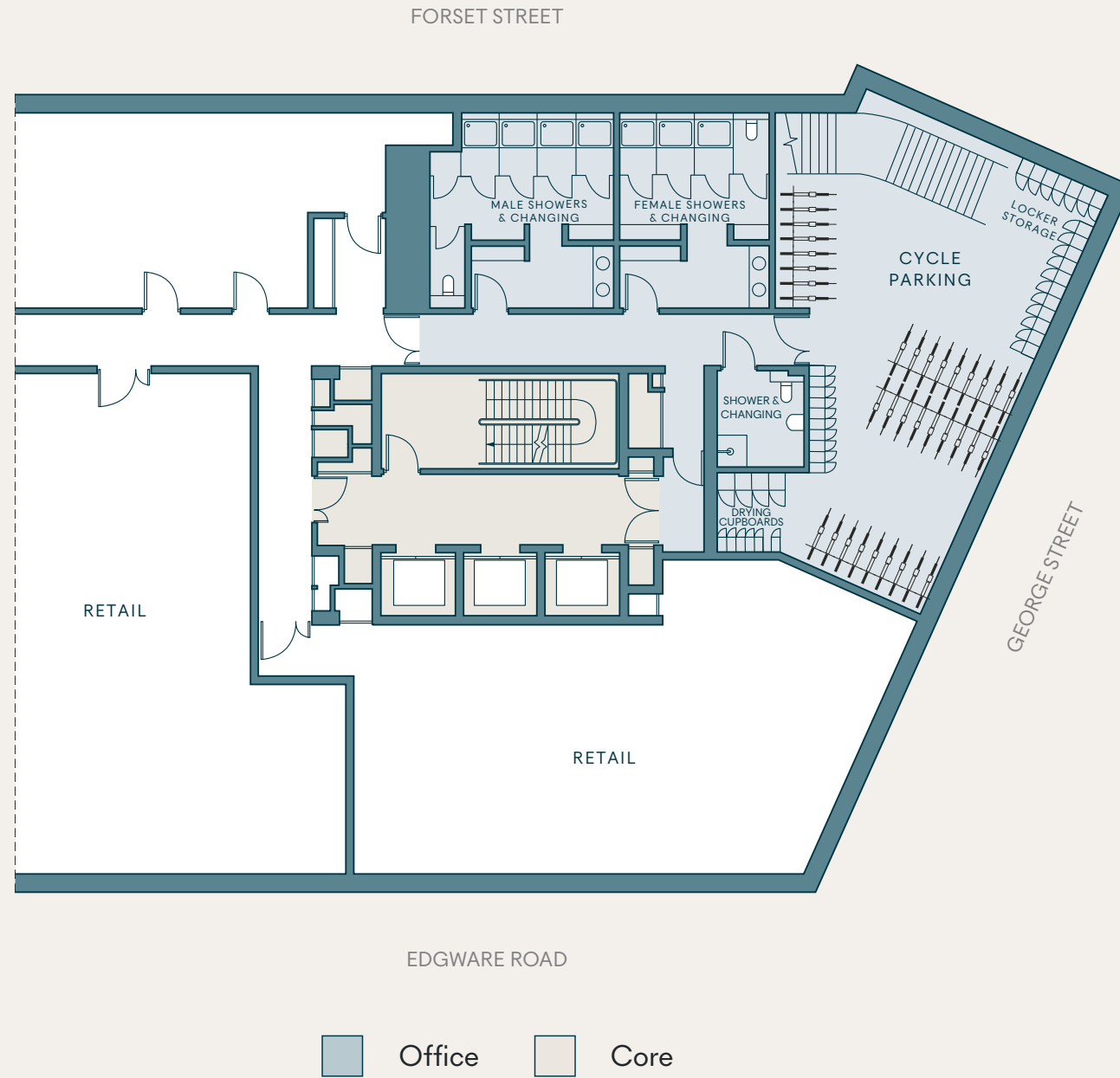
Ground  
Reception  
2,450 sq ft  
228 sq m



Plans are not to scale. For indicative purposes only.

### Lower Ground

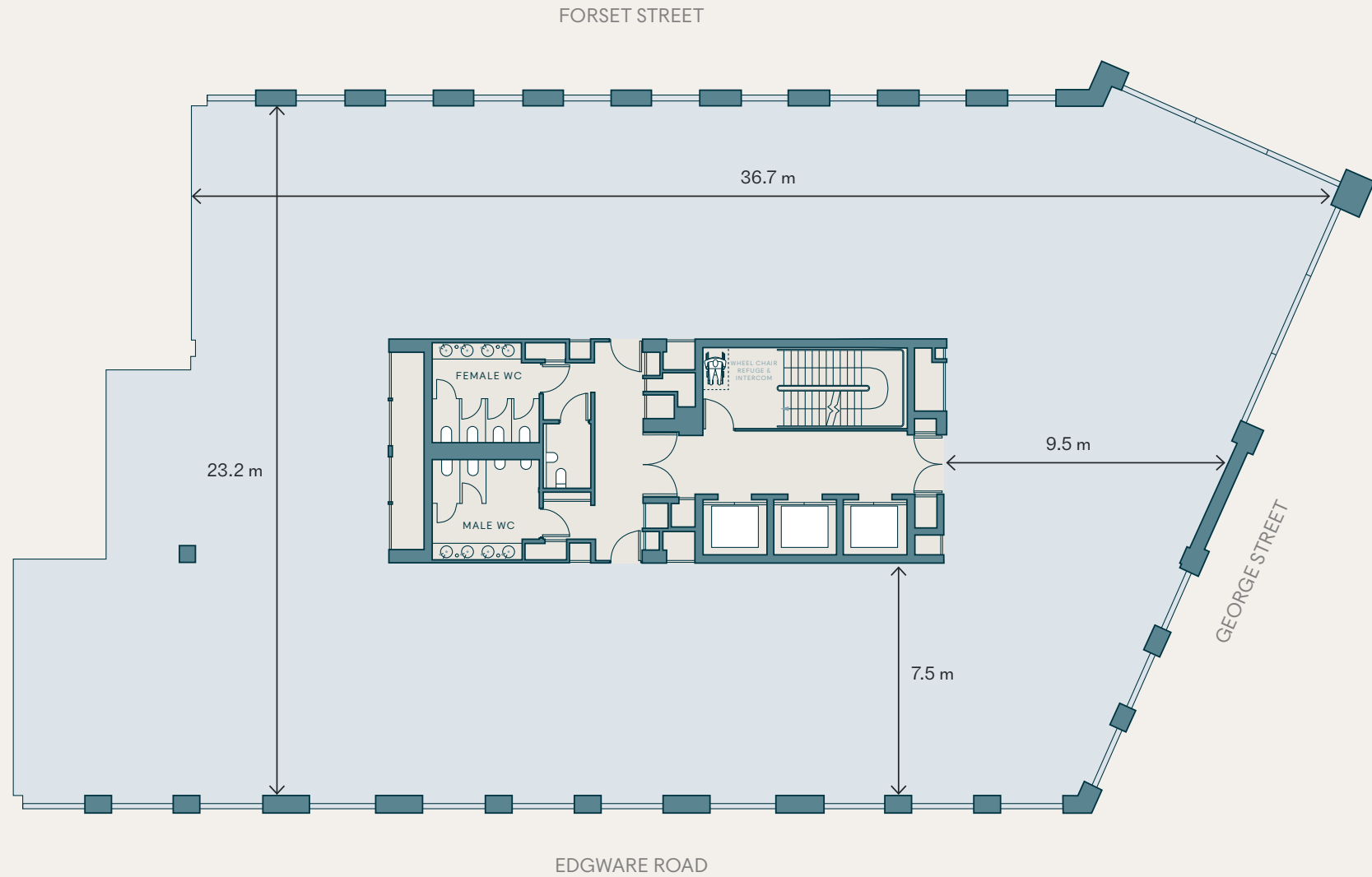
- 66 bike spaces
- 72 lockers
- 8 showers
- Drying facilities



Plans are not to scale. For indicative purposes only.

# Level 1

7,944 sq ft  
738 sq m

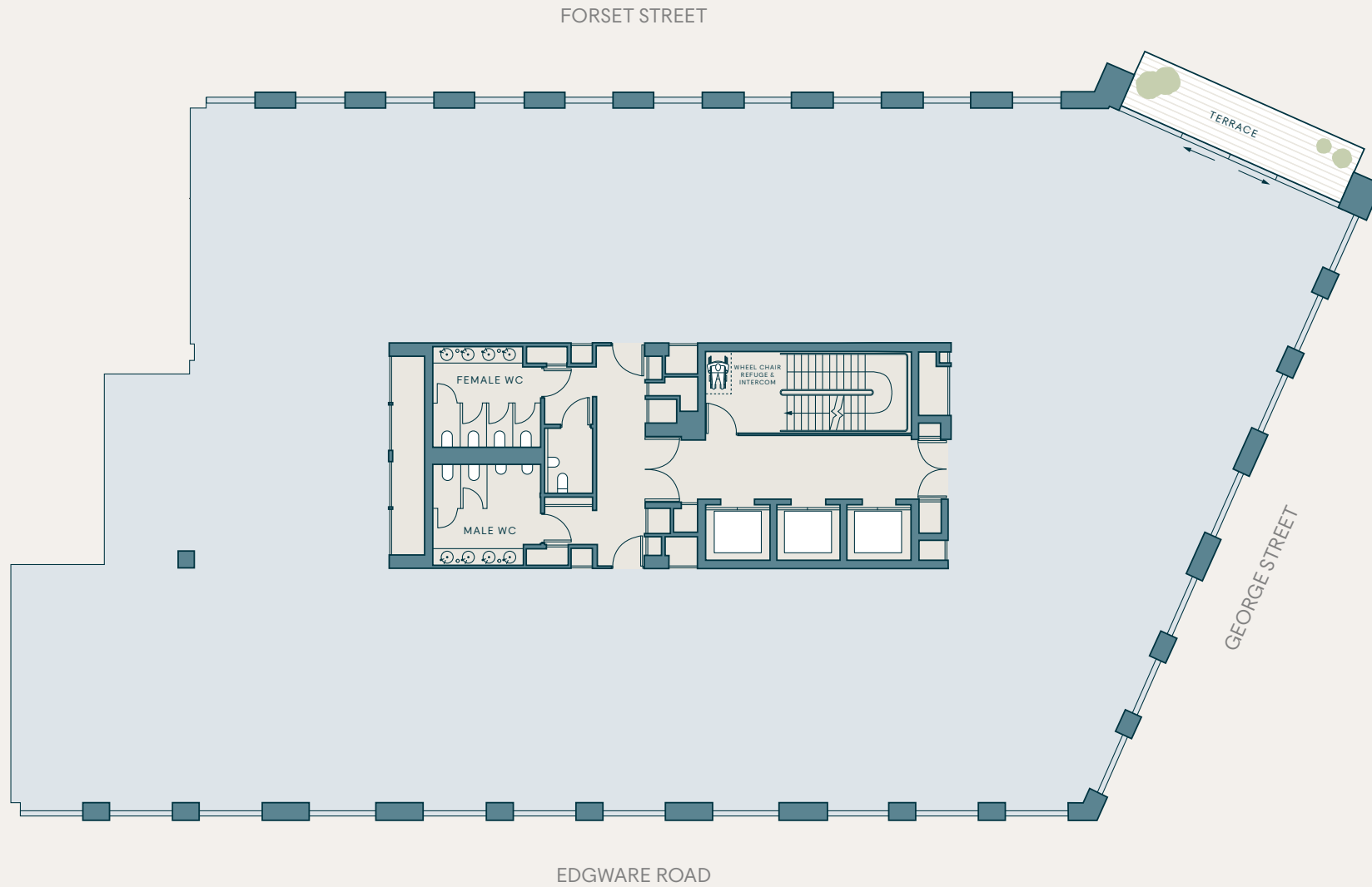


Office Core

Plans are not to scale. For indicative purposes only.

### Level 2 to 5 (Typical)

7,922 - 7,944 sq ft  
736 - 738 sq m



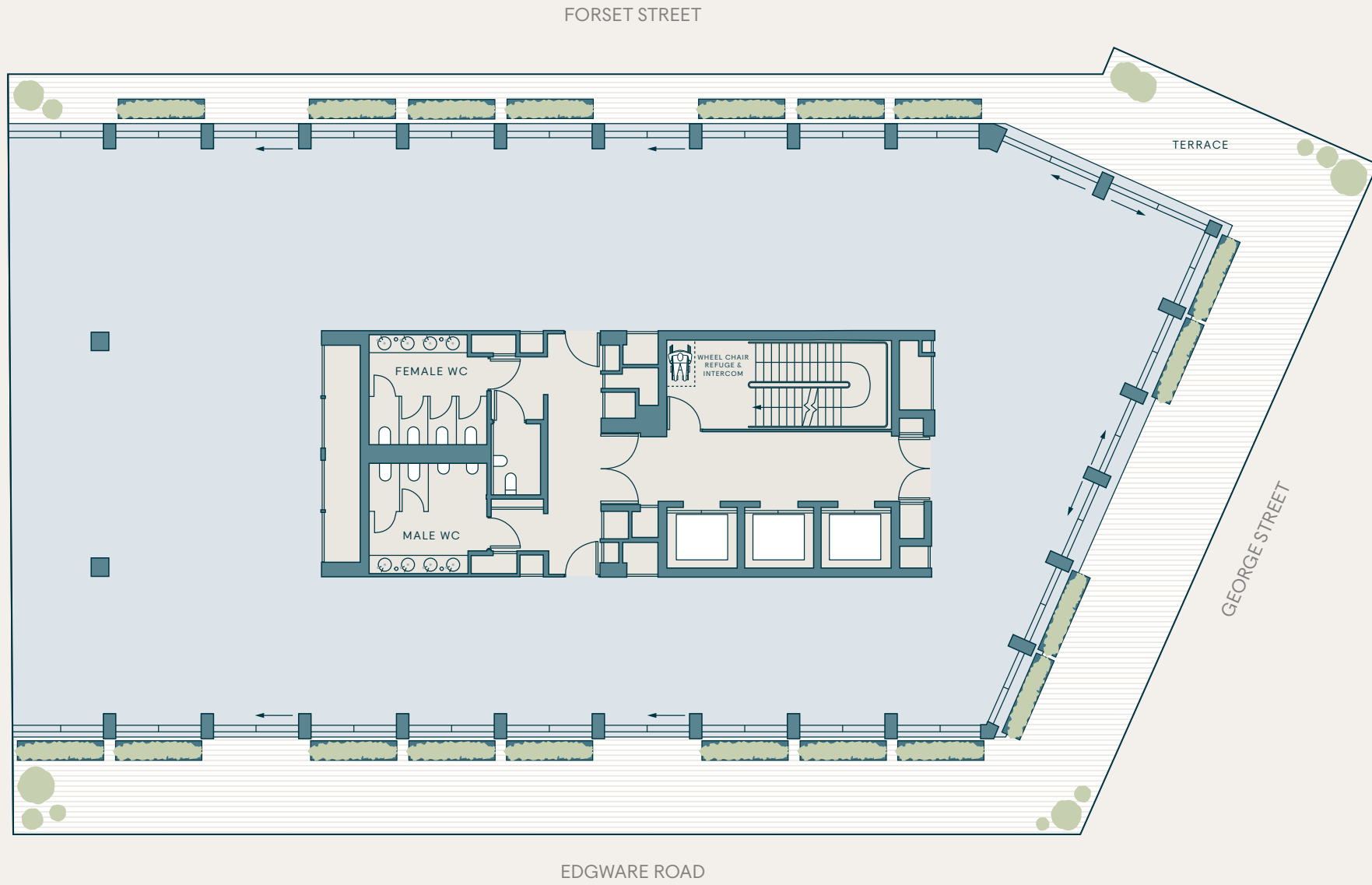
Office Core Terrace

Plans are not to scale. For indicative purposes only.

# Level 6

Office  
4,844 sq ft  
450 sq m

Terrace  
2,583 sq ft  
240 sq m



Office
  Core
  Terrace